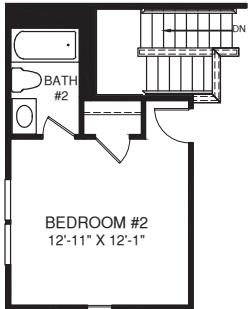


STAPLETON

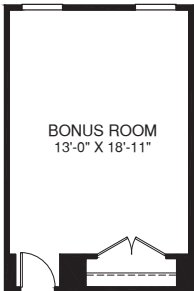
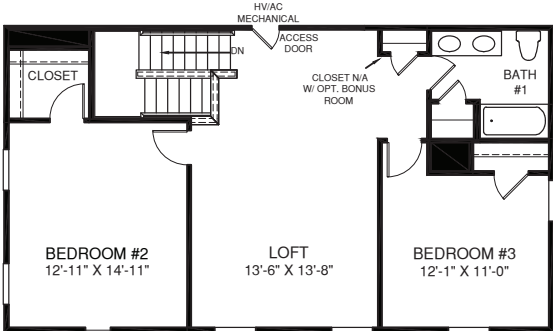
ELEVATION K



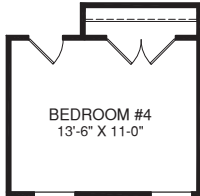
ELEVATION L



OPT. BATH #2

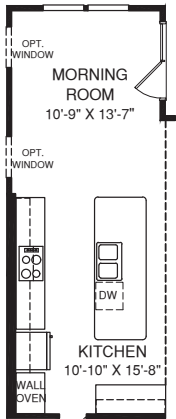


OPT. BONUS ROOM

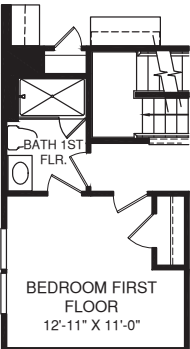


OPT. BEDROOM #4

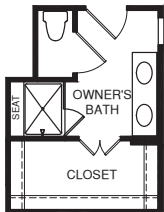
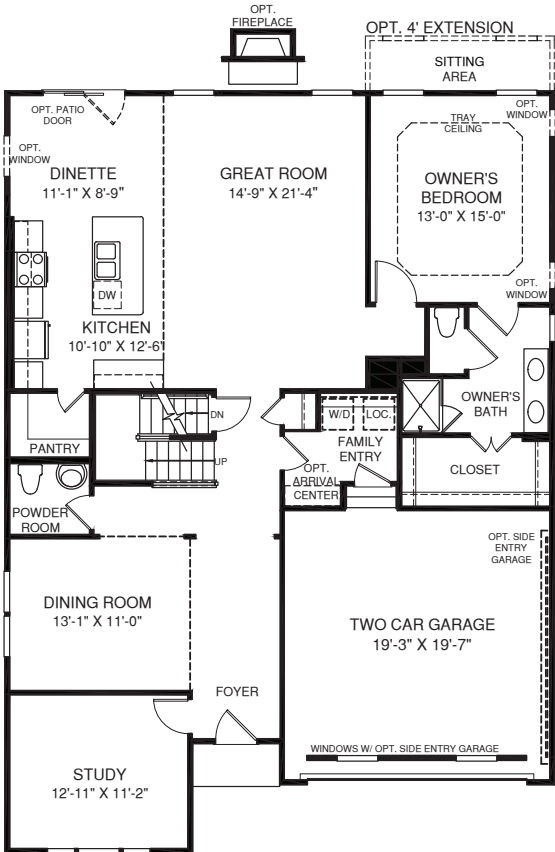
UPPER LEVEL



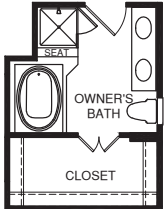
OPT. MORNING ROOM SHOWN W/ OPT. UPGRADE KITCHEN



OPT. BEDROOM FIRST FLOOR



OPT. OWNER'S BATH W/ ROMAN SHOWER



OPT. OWNER'S BATH W/ SOAKING TUB & SHOWER

MAIN LEVEL

An optional finished basement is available. Please see brochure or online marketing material for details.

Although all illustrations and specifications are believed correct at the time of publication, the right is reserved to make changes, without notice or obligation. Windows, doors, ceilings, and room sizes may vary depending on the options and elevations selected. Optional items indicated are available at additional cost. This brochure is for illustrative purposes only and not part of a legal contract. It is recommended that the architectural blueprints be reserved for further clarification of features. Not all features are shown. Please ask our Sales and Marketing Representative for complete information.

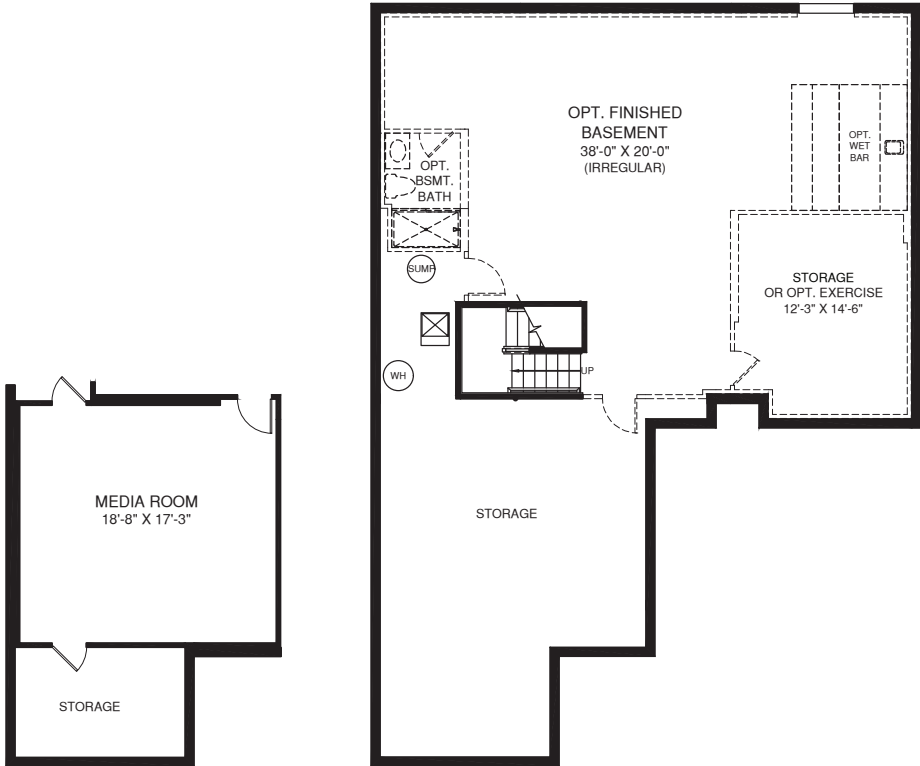
Elevations shown are artist's concepts. Floorplans may vary per elevation. Heartland Homes reserves the right to make changes without notice or prior obligation.

HH-12195TL00X01BSMTCRFT-H-SWZ





OPT. FINISHED BASEMENT SHOWN W/  
OPT. MORNING ROOM AND 4' EXTENSION ABOVE



OPT. MEDIA ROOM

LOWER LEVEL



Although all illustrations and specifications are believed correct at the time of publication, the right is reserved to make changes, without notice or obligation. Windows, doors, ceilings, and room sizes may vary depending on the options and elevations selected. Optional items indicated are available at additional cost. This brochure is for illustrative purposes only and not part of a legal contract. It is recommended that the architectural blueprints be reserved for further clarification of features. Not all features are shown. Please ask our Sales and Marketing Representative for complete information.

HH1219STL00v01BSMTCRFT HHSWZ

